



GRAND CANYON MODEL RAILROADERS

MAIN LINE

June, 2024

Volume 33

Number 6

PRESIDENT'S MESSAGE

by John Draftz

Our next regular meeting will be June 22nd at the Our Savior's hall on E Glendale. **NOTE:** June has five Saturdays. The Theme: Hot Dogs and Apple Pie; Flag Day; Red, White, and Blue trains; patriotic trains, cars, etc.; item(s) w/ flag(s). A goal of this activity is to give members a chance to share some of their collection with other members. The BoD usually meets that morning about 8:30 with the general member meeting at 10.

There are some changes we need to make to our bylaws. At the May meeting, the proposed changes were discussed. The members present OK'd sending the changes to the GCMR members for approval. The changes were included in the May newsletter. You should have gotten a ballot by now. If not, contact Chris (480-820-9559 or sparkyshome@cox.net) and let him know.

The members decided to switch our storage facility to one at 36th St & Washington where a larger unit was available. That unit is large enough for our current items, e.g., raffle prizes, as well as for the mobile layout. This will allow us to park that layout inside the unit thus out of the elements. On May 29th, the move between units was made. Members helping make the move were Chris Allen, Mike Darus, and John. Draftz, and Glenn Saber. Larry Messing also

There is a possibility for the GCMR to display the mobile layout at an upcoming Tempe event. More on that event at the meeting.

Our July meeting date will be a summer mini-meet. The meet is free to the public and tables on a first come basis are free to sellers. Janet is willing to serve as the event coordinator. Members wanting a table must contact her before July 1st (602-569-0568 or tjmattern@cox.net) to reserve one. After that, members of other train clubs will have access to a remaining unreserved table. Since table space is limited, it's critical that reservations be made. Once all reservations have been made and tables are still available, only GCMR sellers can ask Janet for a second table. The challenge is to get the word out to the public and thus potential buyers. If the July mini-meet continues to be a success, we'll continue holding the July date as such.

The fall Cactus swap meet is Saturday, September 28th, with set up the Friday afternoon before. As of this writing, we have a 40% sell out with more reservations on the way. If you have not already made a reservation, see our www.gcmrr.org web site vendor tab for the form.

As we display the mobile layout at our regular venues and as we host sellers and buyers at meets, we need to find ways to invite people to join the GCMR. Please give some thought to

what can be done to attract new members. What could we do at regular meetings that would motivate people to attend beyond what we already do. This will be an agenda item for June.

See you the 22nd

CALENDAR

GCMR meets are held at 9:00am in the Parish Hall of Our Saviors Lutheran Church at 1212 East Glendale Avenue in Phoenix, located on the north side of Glendale, just east of the traffic light at 12th St. It is easily reached off the Glendale Exit of either I-17 or SR 51. Go east from I-17 or west from SR 51 to 12th Street.

June 22 - GCMR meet - Our Saviors Lutheran Church - Hot Dogs and Apple Pie; Flag Day; Red, White, and Blue trains; patriotic trains, cars, etc.; item(s) w/flag(s)

July 27 - GCMR meet - Our Saviors Lutheran Church - summer Mini Meet

August 10 - Beat the Heat meet, Prescott - see the flyer this issue

August 24 - GCMR meet - Our Saviors Lutheran Church "Guess the heat meet" Tell us about your entry

SECRETARY'S REPORT

by Chris Allen

Note, because of the upcoming Memorial Day weekend, the May meeting was held one week earlier than normal. President John Draftz called the meeting to order at 10:00 AM. Attendance was fourteen members with no guests. Treasurer Glenn Saber reported the account ballances

General announcements.

Rail Fair will be October 5 & 6 this year. We will take the portable layout and run both days. The

Arizona Railway Museum is unsure of the parking for the November 9 Fall Open House. They are working with the City of Chandler to

resolve it and be able to host the event. We will bring the portable layout if the event is held.

The dates for Adobe Mountain have been announced as Dec 6 & 7, 13 & 14, and 20 & 21. At the moment, the portable layout is scheduled to run those three weekends.

Educational Segment.

+ Rod Johnson had a Menards Flat Car that had a load of two military tanks. Speaking of tanks of a different kind,

+ John Draftz brought in an American Flyer Army Tank Car.

+ John Zaval had an interesting item, a beautiful Union Pacific Diesel passenger train advertising piece. It had a Los Angeles address on the back that did not yield any results for John, but most likely it was used to promote the City of Los Angeles train that UP ran in direct competition with the AT&SF Super Chief.

+ The showstopper was Mike Darus who brought in a marvelous miniature re-enactment of the Battle of Picacho Peak that happened in April of 1862. Mike told the story of how a botched Union Army skirmish allowed the Confederate troops to withdraw back to Tucson and warn the troops there. The battle was the farthest west there were recorded casualties during the Civil War. Although no railroads were used during the actual battle, Mike's display was a wonderful mix of fact and imagination.

New Business. Mini Meet is scheduled for July again inside the hall. Get your table reservations in at the next meeting if you plan to sell. There were a few problems with people showing up late, some almost at the time we opened the hall. **If you are not in the hall by 8:30 AM prior to the 9:00 AM opening, your table will be given away.**

Next John spoke about the Bylaws changes. After consulting with a lawyer, a proposed change to the incorporation documents was deleted. Motion by Dave Brown, second by John Zaval to send the proposed Bylaws amendments to the membership for a vote.

Motion carried unanimously. The election will be done via email.

During the Board of Directors meeting a discussion was held on a solution to the storage issue and protecting the largest asset the club has: the portable layout. The Board voted to abandon the idea of purchasing any type of structure and installing it on the Adobe Mountain property. Instead, Glenn will investigate the rental of a larger storage locker large enough to house the trailer and all the club's other assets in one location. A report will be given at the June meeting. (Secretary's note; see update elsewhere in this issue.)

MOVING DAY

by Chris Allen

At the May Meeting, which was held early due to the Memorial Day weekend, the Board of Directors decided that instead of erecting some type of structure on the Adobe Mountain property, we would rent one larger storage locker.

The reasons for the change primarily centered around the two basic facts. First, the entire property is leased from numerous county and city departments which would likely need to approve of any structure built and second once built although it is ours to use, we can't take it with us, and it becomes part of the park's property.

The deadline was the of end of June. It was decided to find a larger storage facility that would house and protect the trailer for the upcoming monsoon season. Treasurer Glenn Saber accepted the challenge. Within a week of our May meeting, a building was found and he and John Draftz agreed that a new locker near Sky Harbor Airport was centrally located and fit our financial plan.

On May 29 a crew of volunteers and a small fleet of trucks met at the old locker and emptied it out. They then drove to the new location, set up the shelving and emptied the trucks.

Then on June 15, a small crew organized the shelves and got the locker ready to have the trailer moved in. President Draftz will update the membership at the June meeting.

Here are some photos of the event.





THEY ARRIVED, BUT

by Peter Atonna

Many of us are admirers of the gorgeous locomotives and passenger cars produced by Golden Gate Depot and 3rd Rail, both owned by Scott Mann. Over the years, many of their products have graced my layout's rails.

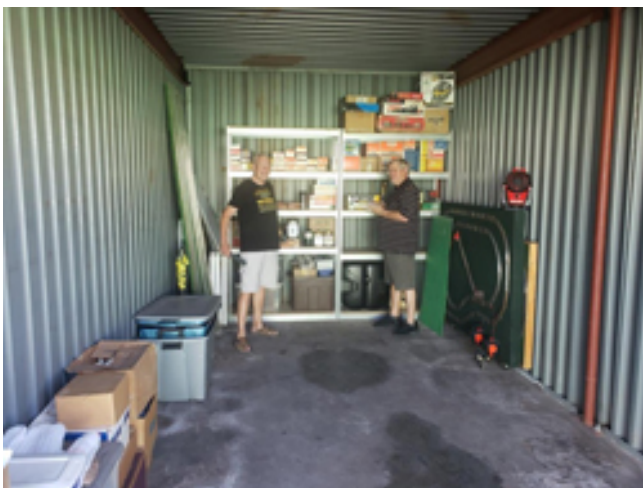
So, when a year or so ago, they announced a run of Amtrak Superliners, I jumped and ordered a set.

Now the back story

I have always loved passenger trains, so when KLine announced a set of full scale length Amtrak Superliners about 2000, I quickly put in an order. Now, K Line didn't run then all at once, but a car or two in every six month catalog. Bit by bit, soon I had a set of coaches, sleepers and a diner. But, they never offered the defining car, the full widow lounge.

Once at York, at the KLine booth I ran into Maury Kline and asked about the lounge cars. His reply was a curt, "When I get around to it"

The K Line cars were great, I had detailed the interiors and all, but the lack of a lounge car still bothered me. So, when Lionel announced their Superliners about 2010, I jumped on them. This was a full set including a sound diner. But they were only 18" long, not scale length. Lionel had not yet figured out that hi rail modelers wanted full scale length cars.



But they did the job for years - until Sunset announce their Superliners.

If you have not bought from them, it is important to know that an announcement does not mean you have bought them. They take orders until there are enough to finance a production run. In this case, the wait was pretty short and at the beginning of this year the announcement came.

Soon an invoice arrived meaning upon payment that your set was locked in. And a delightful feature, you get a link to follow the container ship's progress as it leaves the orient and heads to Oakland for unloading.

They arrived this week: a five car set consisting of a baggage coach, a coach, diner, the lounge, and a sleeper. I ordered an extra sleeper so the train would have two coaches and two sleepers, pretty much the way Amtrak's Southwest Chief has been running through Flagstaff this year.

When done opening I noticed something was wrong. There were three cars lettered "sleeper" and none lettered "coach". Checking the boxes, all were labelled with two coaches and two sleepers.

So, the next day, I put the cars on the layout with the coach/baggage, then the lounge, diner and the three sleepers,. I turned on the power to see how they looked before contacting Scott Mann about the missing coach and extra sleeper.

There was something wrong, one of the sleepers did not look right.

Peering into the window, it was not a sleeper at all, but a coach! But it was labelled a sleeper!

At the factory somebody had taken a sleeper outer shell and put a coach interior in it and then put it into the normal coach box.

Contacting Scott he saw the humor in this and said a correct coach would be sent on Monday with a return address label for the "Monday" car.

That got me thinking, this is a genuine factory error and they are often worth big bucks. But

then I decided to let him get the big bucks if he wants to sell it that way.

Here are shots of the "error" and the beautiful set on the layout waiting for a coach.



WARNING

If you are planning to sell at the Beat the Heat meet, as of June 15, there are only 30 tables still open. See the vendor app this issue. And it would be a good idea to email them to let them know your table reservation is

MEET PHOTOS

by John Draftz and Chris Allen



Herb Andreen



Rod Johnson



John Zaval



John Draftz



Mike Darus



Grand Canyon Model Railroaders Bylaws Ballot

Completed

Results

GCMR Bylaws - add new Article XI, DISSOLUTION - a YES vote will add the following language

Option	Votes	
<input checked="" type="checkbox"/> YES - add the new language to the GCMR Bylaws	100%	18
<input type="checkbox"/> NO - do not update the Bylaws	0%	0

ARTICLE III. OFFICERS AND THE BOARD OF DIRECTORS SECTION C. Duties - a YES vote changes the language as follows

Option	Votes	
<input checked="" type="checkbox"/> YES - Update and change the Bylaws	100%	18
<input type="checkbox"/> No - do not update the Bylaws	0%	0

ARIZONA'S LARGEST Swap Meet & Train Show

"BEAT THE HEAT"



MODEL TRAINS, TOYS AND ACCESSORIES

August 10th, 9:00 to 1:00pm

150 Tables of Vendors and Sellers

Embry-Riddle Aeronautical University,
3700 Willow Creek Rd, Prescott, AZ

Take Willow Creek Rd to Haas Blvd. Follow the signs through the campus to the venue.

Adults \$5.00, kids 12 yrs and under, Free with their parents. (Cash only, please)

Free parking and free shuttle to the door.

A large "Lego" layout and several demonstration layouts will be there for your enjoyment.

A small food truck will be on site with a variety of sandwiches and food, chips, drinks and cookies to purchase, provided by Embry-Riddle University.

FUN FOR THE WHOLE FAMILY

WWW.CAMRRC.COM

Scan the QR code for more info

